

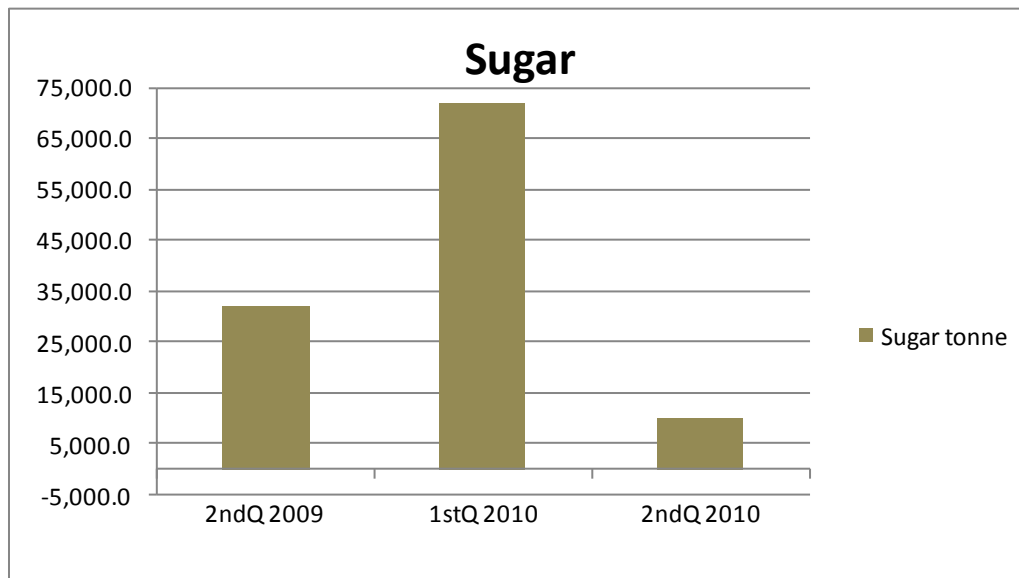
The image features a decorative graphic consisting of three blue circles of varying sizes, each with a darker blue center and a lighter blue outer ring. These circles are arranged in a vertical line, with the largest at the top, a medium one in the middle, and the largest at the bottom. Two thin blue lines intersect at the top left, forming a large 'V' shape that frames the circles. The text 'Second Quarter Production 2010' is positioned to the left of the circles.

**Second Quarter
Production 2010**

Production 2nd Quarter 2010

Sugar

Sugar production declined dramatically in the second quarter of 2010 compared to second quarter 2009. Production was down 68.3% from 31,907 tonnes to 10,119 tonnes. The industry



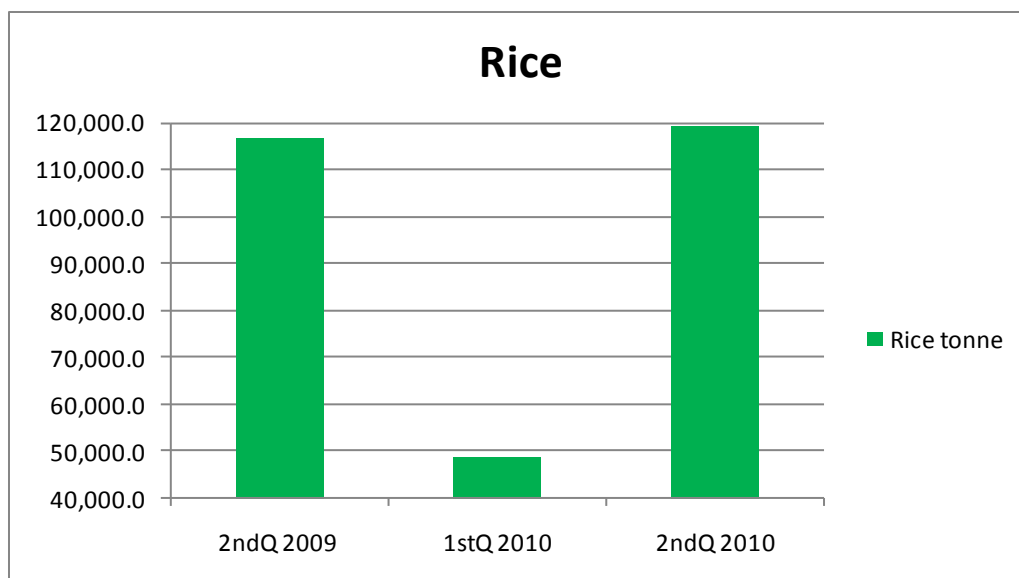
was plagued by drought conditions which caused a decline in first crop production which ended in May of 2010. The statistical decline is also partly attributable to the out-of-crop period which occurred during the second quarter.

The industry showed a marked decline in production in the second quarter of 2010 as compared with first quarter production which had outstripped production in first quarter 2009. This was also attributable to the out-of-crop period.

Rice

Rice production remained relatively stable in the second quarter of 2010 as compared to second quarter 2009, increasing by only 2.3%. Output moved from 116,715 tonnes to 119,385 tonnes. Output in the rice sector has increased steadily in recent years as more acreage and increased yield boost output.

As compared to first quarter production of 2010, the output of rice was dramatically up, moving from 48,882 tonnes in the first quarter to 119,385 tonnes in the second.



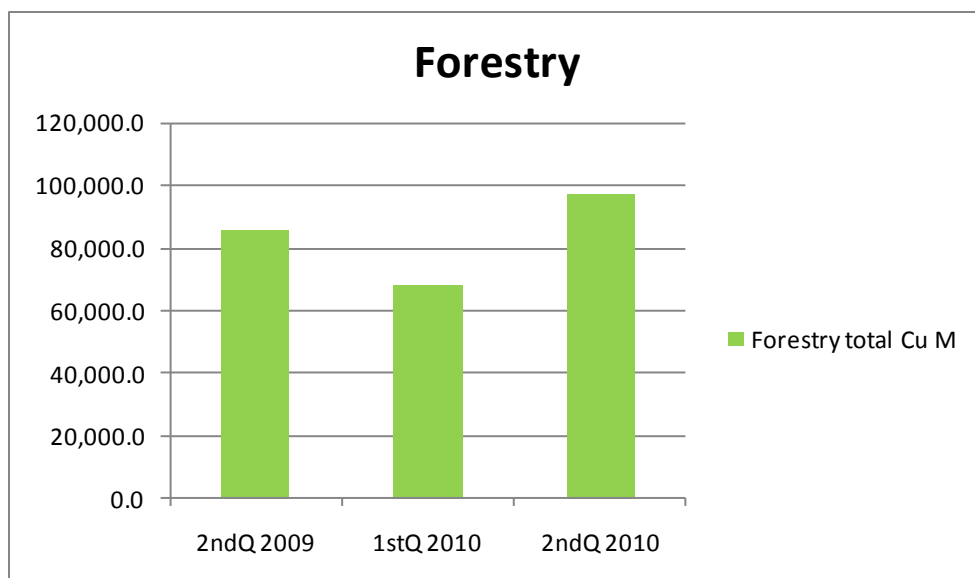
Forestry

Total output in the forestry sector was up 13% in the second quarter of 2010 compared to second quarter 2009. Production increased to 97,221.8 cubic metres in the second quarter of 2010 as compared to 86,005 cubic metres during the same period last year. With the exception of production of non-greenheart logs, however, most output in the forestry sector was down in the second quarter of 2010 compared to last year.

Production of greenheart logs fell by a sharp 40.3% to 10,555.7 cubic metres in the second quarter of 2010 from 17,667 cubic metres in the corresponding period last year. Output of logs of other species, however, increased by 48%, moving from 45,023.4 cubic metres in the second quarter of 2009 to 66,642.8 cubic metres for the same period this year.

Sawnwood production declined by 11.7% to 16,838.5 cubic metres for the second quarter of 2010 as compared to output of 19,067.5 cubic metres in the corresponding period in 2009. Roundwood production fell by 25%, moving from 4,247.1 cubic metres in the second quarter of 2009 to 3,184.7 cubic metres in 2010. Production of charcoal also declined, falling by 18.9% in the second quarter of 2010 as compared to the second quarter of 2009. Output fell from 2,956.8 cubic metres to 2,396.5 cubic metres. Firewood production was also down, moving from 5,210.1 cubic metres to 4,163.4 cubic metres, a drop of 20.1%. Output of plywood fell by 10.3% in the second quarter of this year, falling to 5,965.1 cubic metres from 6,653.5 cubic metres in the corresponding period in 2009.

Total forestry was significantly higher in the second quarter of 2010, at 97,221.8 cubic metres, compared to the first quarter figure of 67,580.6 cubic metres.



Agriculture, Forestry and Fishing

		2ndQ 2009	1stQ 2010	2ndQ 2010	% change 2009-2010
Sugar	tonne	31,907.0	71,745.0	10,119.0	-68.3%
Rice	tonne	116,715.0	48,882.0	119,385.0	2.3%
Forestry total	Cu M	86,005.0	67,580.6	97,221.8	13.0%
Total logs	Cu M	62,690.4	50,309.5	77,198.6	23.1%
Greenheart logs	Cu M	17,667.0	10,663.6	10,555.7	-40.3%
Other logs	Cu M	45,023.4	39,645.9	66,642.8	48.0%
Sawnwood	Cu M	19,067.5	13,409.6	16,838.5	-11.7%
Roundwood	Cu M	4,247.1	3,861.5	3,184.7	-25.0%
Charcoal	Cu M	2,956.8	3,621.7	2,396.5	-18.9%
Firewood	Cu M	5,210.1	2,739.3	4,163.4	-20.1%
Plywood	Cu M	6,653.5	4,430.6	5,965.1	-10.3%
Fish	tonne	7,313.0	4,074.0	6,369.0	-12.9%
Shrimp	tonne	6,381.0	8,224.0	7,298.0	14.4%
Prawns	tonne	233.0	350.0	337.0	44.6%
Small shrimp	tonne	6,148.0	7,874.0	6,961.0	13.2%
Eggs	000	4,455.6	3,527.2	3,072.8	-31.0%
Poultry Meat	tonne	7,575.9	5,559.4	6,793.7	-10.3%

Fishing

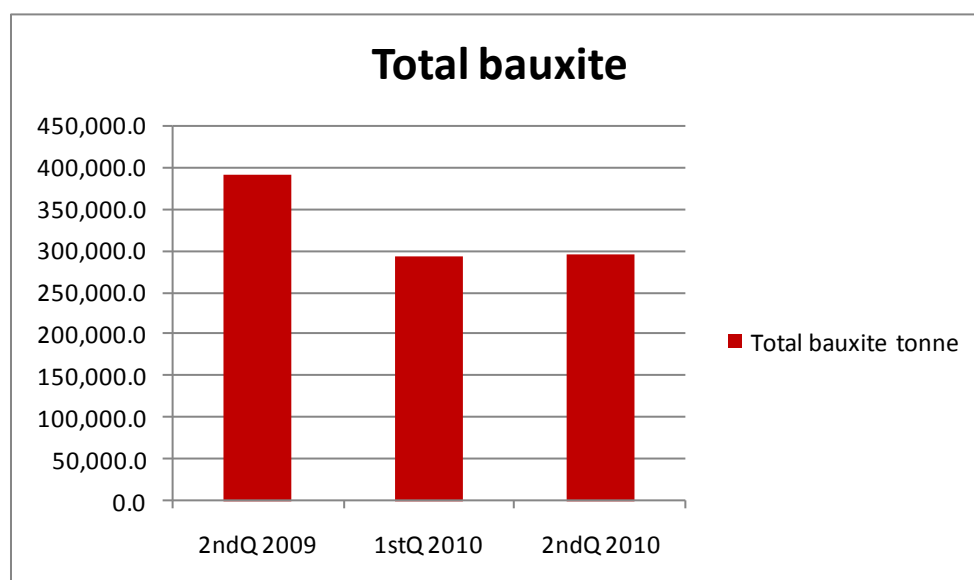
Output in the fisheries sector was mixed in the second quarter of 2010. Output of fish declined by 12.9%, moving from 7,313 tonnes in the second quarter of 2009 to 6,369 tonnes in 2010 while output of shrimp increased by 14.4% to 7,298 tonnes from 6,381 tonnes in 2009. Output

of prawns increased by 44.6% to 337 tonnes in the second quarter of 2010 compared to 233 tonnes in 2009. Output of small shrimp was also up, increasing by 13.2% to 6,961 tonnes from 6,148 tonnes in the corresponding period last year.

Compared to first quarter 2010 production, output of fish was significantly higher, moving from 4,074 tonnes to 6,369 tonnes in the second quarter. Output of shrimp, however, was down from the first quarter total of 8,224 tonnes to 7,298 tonnes in the second quarter. Output of prawns was down marginally from 350 tonnes in the first quarter to 337 tonnes in the second quarter. Production of small shrimp moved from 7,874 tonnes in the first quarter of 2010 to 6,961 tonnes in the second quarter.

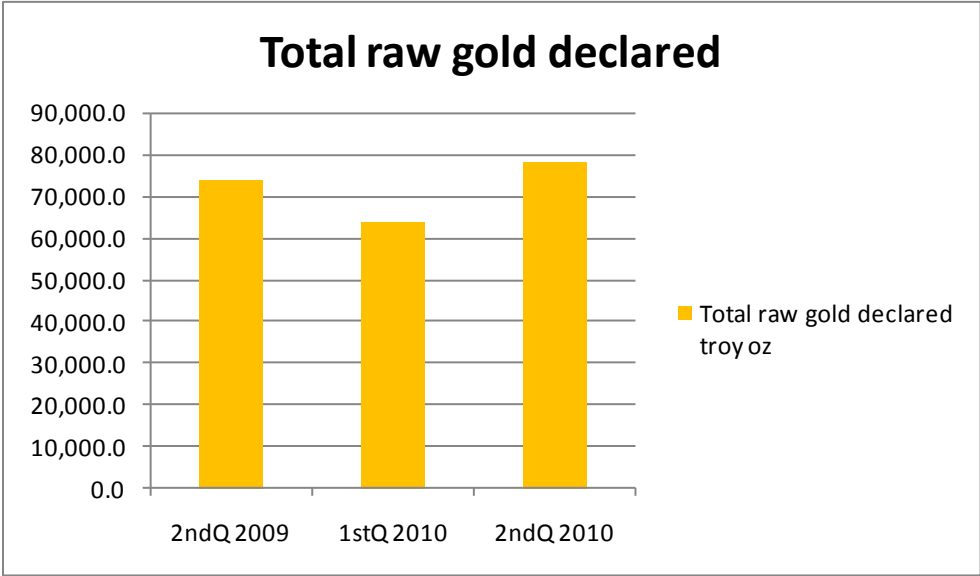
Mining and Quarrying

Output in the mining and quarrying sector was also mixed for the second quarter of 2010. Production of bauxite fell by 24.4% for the period, moving from 390,203 tonnes in 2009 to 295,038 tonnes in the corresponding period this year. The decreased output was primarily due to a decline in demand on the world market as companies contracted output to match the decline in demand.



Gold production increased by a modest 5.8% in the second quarter of 2010 as compared to the same period last year. Output moved from 73,998.7 troy ounces in second quarter 2009 to 78,277.8 troy ounces in 2010. Production of diamonds declined by a dramatic 71% in the second quarter of 2010 with production falling from 40,287.1 metric carats in 2009 to 11,688 metric carats in the corresponding period this year. The decline in diamond production was partly due to a shift in production to gold as higher gold prices caused miners to move into the gold sector. The sector has also been affected by high water which closed some operations, as well as the relative scarcity of skilled workers.

Bauxite production in the second quarter of 2010 was up as compared to the first quarter. First quarter production was at 293,137 tonnes and moved to 295,038 in the second quarter. Gold production also increased in the second quarter of 2010 compared to first quarter of this year. Output moved from 63,934.2 troy ounces to 78,277.8 troy ounces. Diamond production which had drastically declined in the second quarter of 2010 compared to the same period last year was also down compared to first quarter 2010. Production moved from 23,667 metric carats to 11,688 metric carats.



Output of sand fell by 26.9%, declining from 136,976 tonnes in second quarter 2009 to 100,191 tonnes in 2010. Crushed stone production jumped by a significant 57.8% in the second quarter of 2010. In the second quarter of 2009 output of crushed stone was 109,871 tonnes and this rose to 173,410 tonnes for the second quarter of 2010 as both infrastructural projects and private construction continued to move apace.

Output of sand in the first quarter of 2010 was significantly down at 79,444 tonnes. In the second quarter production had improved to 100,191 tonnes. Output of crushed stone in the second quarter showed an improvement over the first quarter, moving to 173,410 tonnes as compared to 126,473 tonnes in the first quarter.

Mining and Quarrying

		2ndQ 2009	1stQ 2010	2ndQ 2010	% change 2009-2010
Total bauxite	tonne	390,203.0	293,137.0	295,038.0	-24.4%
Total raw gold declared	troy oz	73,998.7	63,934.2	78,277.8	5.8%
Diamonds declared	metric cara	40,287.1	23,667.0	11,688.0	-71.0%
Sand declared	tonne	136,976.0	79,444.0	100,191.0	-26.9%
Crushed stone declared	tonne	109,871.0	126,473.0	173,410.0	57.8%

Manufacturing

The manufacturing sector did not continue the recovery that began to be evident in the first quarter of 2010. Output of industrial goods was mixed. Production of laundry soap rose by 19.1% in the second quarter of 2010 compared to the same period last year. Output rose from 22,869 kg to 27,244 kg. Production of stockfeed however was down by 26.5% in the second quarter of 2010. Output fell from 13,177.8 tonnes to 9,679.3 tonnes. Production of corrugated cardboard fell by 8.8% while neutral alcohol fell by 24.9%.

Production of detergent rose by 32.9% while output of paints and putty fell by 12.2% and 12.5% respectively. Production of whitewash was down by 45.2% while output of oxygen rose by 23.4%. Production of acetylene fell by 5.9%.

Manufacturing - Industrial Goods

		2ndQ 2009	1stQ 2010	2ndQ 2010	% change 2009-2010
Laundry soap	kg	22,869.0	26,927.0	27,244.0	19.1%
Stockfeed	tonne	13,177.8	10,609.4	9,679.3	-26.5%
Corrugated carton	000 Sq M	1,067.4	888.4	974.0	-8.8%
Neutral alcohol	000 Lpa	1,289.2	1,153.4	967.7	-24.9%
Detergent	kg	201,213.0	197,435.0	267,499.0	32.9%
Paints	Litre	618,002.2	557,030.4	542,844.2	-12.2%
Putty	kg	104,885.2	83,555.8	91,728.7	-12.5%
White wash	kg	18,285.4	16,523.4	10,026.5	-45.2%
Oxygen	litre	18,055,992.2	20,273,942.6	22,284,086.9	23.4%
Acetylene	litre	1,613,357.2	1,408,705.8	1,517,586.4	-5.9%

Production of rum fell by 57.4% but much of the decline is attributed to a difference in computation of official statistics since output of bulk rum is not longer computed in the total. Production of malta fell by 18.9% but output of wine rose by a significant 59.8%. Production of shandy increased by 15.3% while output of vita malt fell by some 29.3%. Beer and milk stout

production rose 9.2% while output of aerated beverages and mineral water rose by 6.9% and 10.2% respectively.

		Manufacturing - Edible Goods			
					% change
		2ndQ 2009	1stQ 2010	2ndQ 2010	2009-2010
Rum	000 Lpa	2,022.4	2,934.5	861.7	-57.4%
Beer & milk stout	000 litre	2,094.7	2,471.4	-	
Malta	litre	202,462.9	159,476.0	164,112.9	-18.9%
Wine	cases	43,488.0	57,060.0	69,474.0	59.8%
Shandy	cases	12,585.0	17,725.0	14,513.0	15.3%
Vita malt	cases	23,122.0	13,127.0	16,348.0	-29.3%
Beer & stout	000 litres	2,996.6	3,214.5	3,272.5	9.2%
Total aerated	000 litres	10,445.1	9,146.3	11,163.4	6.9%
Mineral/distilled water	000 litres	3,985.2	4,213.6	4,393.6	10.2%
Margarine	kg	520,166.6	385,326.0	514,635.0	-1.1%
Butter	kg	899.0	0.0	2,023.0	125.0%
Baking Fat/Lard	kg	108,016.0	87,932.0	112,856.0	4.5%
Ghee	kg	14,964.0	35,775.0	26,163.0	74.8%
Ice cream	litres	341,125.7	296,883.4	303,190.7	-11.1%
Frostee Pop	cases	141,978.0	12,603.0	15,043.0	-89.4%
Snack Foods	kg	0.0	12,359.8	6,944.6	
Biscuits	000 kg	199.8	275.3	320.7	60.5%
Cereal	kg	24,699.1	31,001.5	26,412.5	6.9%
Flour	tonne	8,848.9	10,098.7	10,093.7	14.1%

Output of margarine fell by a marginal 1.1% to 514,635 kg while production of butter rose by 125% to 2,023 kg. Production of baking fat and ghee rose by 4.5% and 74.8% respectively. Output of biscuits and cereal rose by 60.5% and 6.9% while flour production rose 14.1% due to increased demand.

As compared to first quarter production, output of laundry soap showed improvement, moving from 26,927 kg to 27,244 kg. Production of stockfeeds fell, however, moving from 10,609.4 kg to 9,679.3 kg. Production of corrugated cardboard improved slightly, moving from 888.4 thousand square metres to 974 thousand square metres.

Production of detergent was also up, moving from 197,435 kg to 267,499 kg from the first to the second quarter. Production of paints declined in the second quarter as compared to the first, moving from 557,030.4 litres to 542,844.2 litres. Output of putty showed an improvement in the second quarter compared to the first, moving from 83,555.8 kg to 91,728.7 kg. Production of white wash was also down in the second quarter compared to the first, declining from 16,523.4 kg to 10,026.5 kg. Output of oxygen improved from 20,273,942.6 litres to 22,284,086.9 litres. Acetylene production improved from 1,408,705.8 litres to 1,517,586.4 litres.

Output of edible goods, with a few exceptions, improved in the second quarter of 2010 compared to the first quarter. Output of rum was down from 2,934.5 thousand Lpa to 861.7 thousand Lpa while output of malta moved from 159,476 litres to 164,112.9 litres. Production of wine improved from 57,060 cases to 164,112.9 cases while output of shandy declined from 17,725 cases to 14,513 cases. Output of vita malt which stood at 13,127 cases in the first quarter of 2010 rose to 16,348 cases in the second quarter.

Output of beer and stout improved marginally from 3,214.5 thousand litres to 3,272.5 thousand litres in the second quarter. Total production of aerated beverages, which stood at 9,146.3 thousand litres in the first quarter, moved to 11,163.4 thousand litres in the second quarter. Output of mineral/distilled water showed a marginal improvement, moving from 4,213.6 thousand litres to 4,393.6 thousand litres.

Output of margarine in the first quarter of 2010 stood at 385,326 kg but improved significantly in the second quarter to 514,635 kg while output of baking fat moved from 87,932 kg to 112,856 kg. Production of ghee was particularly high in the first quarter at 35,775 kg but moved to 26,163 kg in the second quarter.

Production of ice cream was at 296,883.4 litres in the first quarter and rose to 303,190.7 kg in the second. Output of frostee pop improved slightly from 12,603 cases to 15,043 cases. Production of snack foods fell significantly from 12,359.8 kg in the first quarter to 6,944.6 kg in the second. Production of biscuits moved from 275.3 thousand kg to 320.7 thousand kg. Production of cereal which stood at a high of 31,001.5 kg in the first quarter fell to 26,412.5 kg in the second. Production of flour remained relatively stable between the first and second quarters of 2010 moving from 10,098.7 tonnes in the first to 10,093.7 tonnes in the second.