



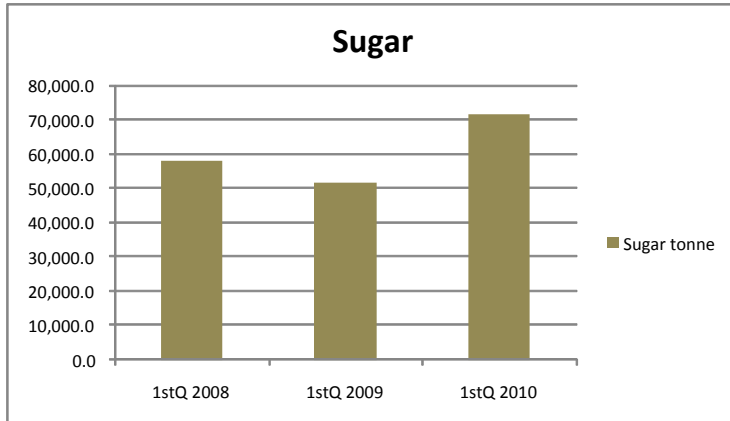
Private Sector Commission

First Quarter Production Information June 2010

Production – First Quarter 2010

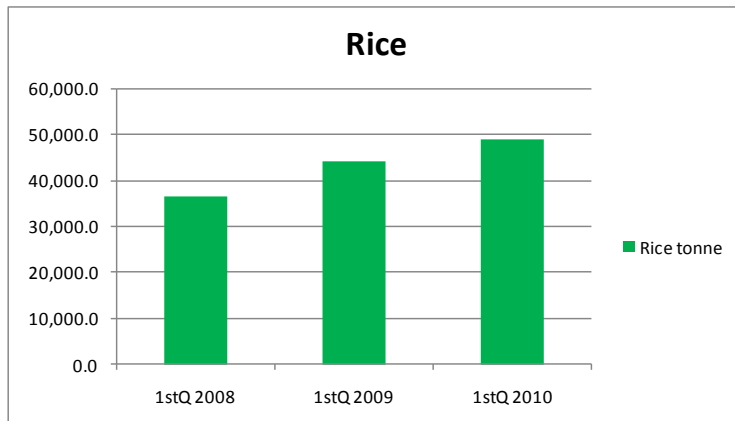
Sugar

Output of sugar was up 39.4% in the first quarter of 2010 compared to first quarter 2009. Production for first quarter 2009 stood at 51,450.1 tonnes and rose to 71,745.0 tonnes in the first quarter of 2010 as the industry seeks to improve upon 2009 production.



Rice

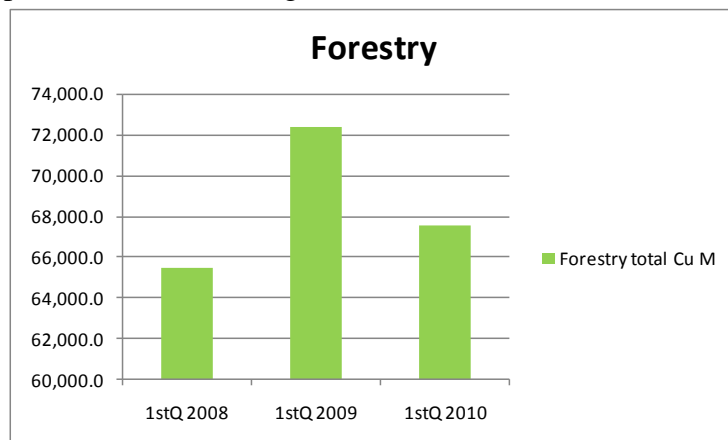
Rice production rose by 10.7% to 48,882.0 tonnes in the first quarter of 2010 as against first quarter 2009. The sector has been growing steadily since 2008.



Forestry

Almost the entire forestry sector declined in the first quarter of 2010 compared to first quarter 2009. Total log production fell by 7.0% from 54,074.6 cubic metres in first quarter 2009 to 50,309.5 cubic metres for the corresponding period in 2010. Greenheart log production was down 8% to 10,663.6 cubic metres from 11,593.8 cubic metres in first quarter 2009 while

production of other logs fell 6.7% to 39,645.9 cubic metres from 42,480.8 cubic metres in 2009.



Sawnwood production fell 2.8% to 13,409.6 cubic metres from 13,795.4 cubic metres in first quarter 2009. Roundwood output was down 14.2% to 3,861.5 cubic metres from 4,501.7 cubic metres for the corresponding period last year. Production of charcoal and plywood both rose in 2010. Charcoal output was up 95.1% to 3,621.7 cubic metres from 1,856.7 cubic metres in first quarter 2009 while plywood production rose by 621.4% to 4,430.6 cubic metres from 621.4 cubic metres in first quarter 2009. Output of firewood fell 10.0% to 2,739.3 cubic metres in the first quarter of 2010 from 3,045.0 cubic metres in the first quarter of 2009.

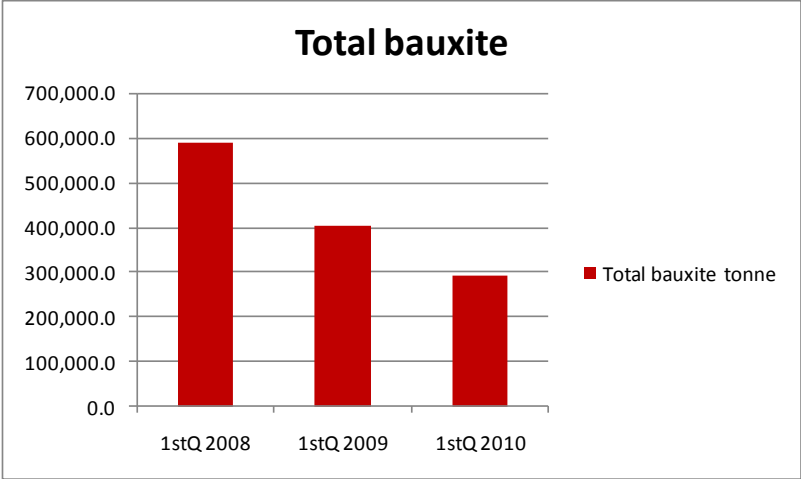
		Agriculture, Forestry and Fishing			
					% change
		1stQ 2008	1stQ 2009	1stQ 2010	2009-2010
Sugar	tonne	58,007.0	51,450.1	71,745.0	39.4%
Rice	tonne	36,430.0	44,153.0	48,882.0	10.7%
Forestry total	Cu M	65,455.2	72,371.7	67,580.6	-6.6%
Total logs	Cu M	48,251.3	54,074.6	50,309.5	-7.0%
Greenheart logs	Cu M	9,950.8	11,593.8	10,663.6	-8.0%
Other logs	Cu M	38,300.5	42,480.8	39,645.9	-6.7%
Sawnwood	Cu M	12,682.3	13,795.4	13,409.6	-2.8%
Roundwood	Cu M	4,521.6	4,501.7	3,861.5	-14.2%
Charcoal	Cu M	662.3	1,856.7	3,621.7	95.1%
Firewood	Cu M	2,872.0	3,045.0	2,739.3	-10.0%
Plywood	Cu M	450.0	621.4	4,430.6	613.0%
Fish	tonne	4,437.0	4,435.0	4,074.0	-8.1%
Shrimp	tonne	4,820.0	4,832.0	8,224.0	70.2%
Prawns	tonne	323.0	281.0	350.0	24.6%
Small shrimp	tonne	4,497.0	4,551.0	7,874.0	73.0%
Eggs	000	3,379.5	6,267.0	3,527.2	-43.7%
Poultry Meat	tonne	6,105.2	6,438.9	5,559.4	-13.7%

Fishing

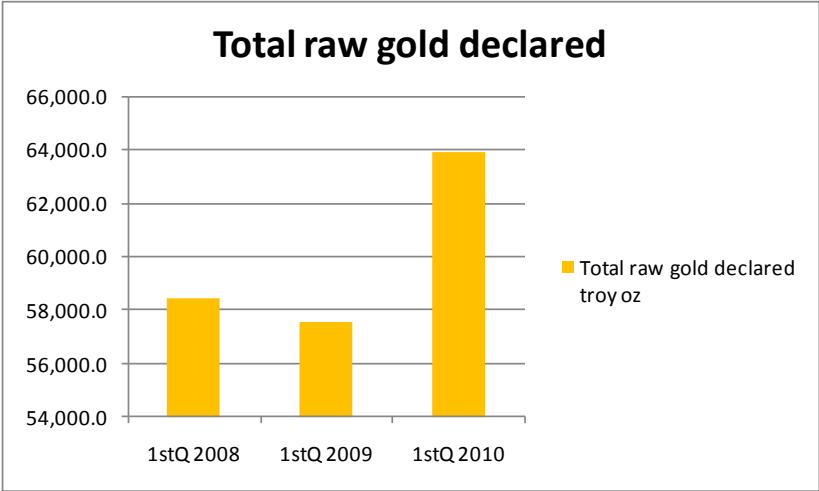
Output of fish for the first quarter of 2010 was down while production of both prawns and small shrimp rose significantly. Fish production fell 8.1% to 4,074.0 tonnes from 4,435.0 tonnes in the first quarter of 2009. Production of prawns rose by 24.6% to 350.0 tonnes from 281.0 tonnes for the same period last year. Output of small shrimp climbed by a significant 73.0% to 7,874.0 tonnes in the first quarter of 2010 from 4,551.0 tonnes in the corresponding period in 2009.

Mining and Quarrying

Production of most types of bauxite fell significantly in the first quarter of 2010 as compared to first quarter 2009. Total bauxite production was down 27.4% to 293,137.0 tonnes from 403,925.0 tonnes in the first quarter of 2009.



Gold production rose 11.1% to 63,934.2 troy ozs from 57,550.8 troy ozs for the corresponding period last year as higher prices and increased demand drove the sector. Diamond production fell by a significant 49.7% to 23,667.0 metric carats from 47,059.3 metric carats for the first quarter of 2009. The sector’s decline continued as higher gold prices caused a shift in production to gold.



Production of sand fell by 6.7% to 79,444.0 tonnes from 85,175 tonnes in the first quarter of 2009. Output of crushed stone rose by 75.9% to 126,473 tonnes as the building boom continued. Production for the first quarter of 2009 had been 71,881.0 tonnes.

		Mining and Quarrying			
		1stQ 2008	1stQ 2009	1stQ 2010	% change 2009-2010
Total bauxite	tonne	588,657.0	403,925.0	293,137.0	-27.4%
Total raw gold declared	troy oz	58,414.8	57,550.8	63,934.2	11.1%
Diamonds declared	metric cara	42,794.0	47,059.3	23,667.0	-49.7%
Sand declared	tonne	139,219.0	85,175.0	79,444.0	-6.7%
Crushed stone declared	tonne	142,398.0	71,881.0	126,473.0	75.9%

Manufacturing

The manufacturing sector began a recovery from 2009. Output of most industrial goods showed an improvement. Output of stockfeed fell slightly by 2.8% while production of corrugated cartons rose by 49.8%. Output of neutral alcohol declined by 6.6% and production of detergents fell by 10.0%. Production of paints and putty were both up, rising by 41.9% and 8.6% respectively.

Production of beverages also showed an improvement over the same period last year. Rum production rose by 22.9% and output of beer and milk stout was up 48.2%. Production of Malta rose by 29.5% while wine production dipped slightly by 7.6%. Output of shandy rose by 46.6% and output of mineral/distilled water was up 16.1%.

Production of edible items showed a mixed performance. Output of margarine was up 5.4% while production of baking fat was down 44.1%. Output of snack foods and biscuits rose significantly moving by 338.4% and 68.3% respectively. Production of flour was up by 5.5% reflecting greater demand.

Manufacturing - Industrial Goods

		1stQ 2008	1stQ 2009	1stQ 2010	% change 2009-2010
Laundry soap	kg	0.0	0.0	26,927.0	
Stockfeed	tonne	10,161.6	10,912.1	10,609.4	-2.8%
Corrugated carton	000 Sq M	884.8	592.9	888.4	49.8%
Neutral alcohol	000 Lpa	1,159.2	1,235.4	1,153.4	-6.6%
Detergent	kg	199,684.0	179,448.0	197,435.0	10.0%
Paints	Litre	428,450.6	392,495.8	557,030.4	41.9%
Putty	kg	95,752.5	76,924.2	83,555.8	8.6%
White wash	kg	25,092.0	2,018.0	16,523.4	718.8%
Oxygen	litre	23,797,612.0	18,979,857.0	20,273,942.6	6.8%
Acetylene	litre	2,379,502.0	1,606,384.0	1,408,705.8	-12.3%

Manufacturing - Edible Goods

		1stQ 2008	1stQ 2009	1stQ 2010	% change 2009-2010
Rum	000 Lpa	4,024.1	2,388.0	2,934.5	22.9%
Beer & milk stout	000 litre	1,846.4	1,668.0	2,471.4	48.2%
Malta	litre	197,594.2	123,144.3	159,476.0	29.5%
Wine	cases	35,261.0	61,759.0	57,060.0	-7.6%
Shandy	cases	14,049.0	12,089.0	13,127.0	8.6%
Vita malt	cases	14,592.0	11,163.0	13,127.0	17.6%
Beer & stout	000 litres	2,523.8	2,181.6	3,214.5	47.3%
Total aerated	000 litres	8,307.6	8,348.2	9,146.3	9.6%
Mineral/distilled water	000 litres	3,218.8	3,630.4	4,213.6	16.1%
Margarine	kg	253,034.0	365,564.0	385,326.0	5.4%
Butter	kg	2,230.0	0.0	0.0	
Baking Fat/Lard	kg	171,227.0	157,422.0	87,932.0	-44.1%
Ghee	kg	32,273.0	39,803.0	35,775.0	-10.1%
Ice cream	litres	265,291.9	311,177.8	296,883.4	-4.6%
Frostee Pop	cases	16,216.0	15,052.0	12,603.0	-16.3%
Snack Foods	kg	5,694.0	2,819.4	12,359.8	338.4%
Biscuits	000 kg	165.0	163.6	275.3	68.3%
Cereal	kg	16,153.9	23,580.0	31,001.5	31.5%
Flour	tonne	7,724.1	9,753.7	10,098.7	3.5%

